



Peeled Okoume Veneers 13/10ths
Veneer Quality: I/III
Sorted interior plies and core from 100% Okoume

Collage: Classe 3 - Exterior use
Glue standard: Standard EN 314
Dimensional Tolerance: Standard EN 315
Density: 500 kg/m³ +/- 10%. Standard EN 323

THICKNESS	PLIES	2500 x 1220 mm	3100 x 1530 mm
10 mm	5	50 pcs	50 pcs
12 mm	7	40 pcs	40 pcs
15 mm	7	30 pcs	30 pcs
18 mm	9	25 pcs	25 pcs
22 mm	9	22 pcs	22 pcs

Delivery quantity tolerance +/- 10%

Allin Garant Okoume guarantees production from selected veneers, providing rigorously sorted plywood.

Applications: Facades, shutters, requiring several layers of protection.

Manufacturer's Guarantee covering all support detachment risks subject to the correct installation conforming to DTU 41.2 as part of a facade application.



E1



La marque de la gestion forestière responsable

ADVANTAGES

- Weather and moisture resistant
- High mechanical resistance
- Ready for final finish, straight edges

ON

REQUEST

- + Value staining, varnishing, lacquering
- MDO film
- Assembly Layout ■ Sapelli faces
- Machined Edges
- Product certified FSC®



■ RAL colour





ACCESSORIES



TOUCH UP SET

Designed for touching up edges and repairing any accidental damage caused during the installation process.

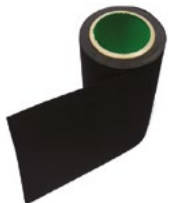
Set consists of 0,5L of tint.



STAINLESS STEEL SCREWS WITH WATERPROOF WASHERS

Screws in RAL colours to correspond with panel colours.
Average consumption: 10 screws/m².

TORX T20W bit.



EPDM PROTECTION BANDING

60 mm or 100 mm.



We offer cladding panels pre-cut to order. You will need to send us a detailed plan including: references, quantities, lengths and widths of the panels required.

We are offering, as an option:

- Panel identification for ease of installation
- Packaging designed for optimal protection
- Compliance with DTU 41.2 on external cladding to answer technical requirements
- Panel machining:
 - 15° angle on horizontal edges
 - 3 mm radius on all 4 ends on visible angles
 - Sanding on all 4 edges



EXTERIOR ALLIN – BRUYNZEEL PANELS FIXATION AND FINISHES GUIDE

The assembly of the panels must comply with the DTU 41.2 standard for exterior cladding.
The firm Allin recommends the use of screws on wood or metal structures.

1. Storage conditions

Exterior cladding panels should be stored in a clean, dry area at a temperature of **between 10°C to 25°C**. To avoid contact between the panels, a layer of intermediate protection should be used to cover all surfaces. To avoid damage to the finished product, this layer should be replaced every time the panels are handled.

2. Rain screen options

The material used as a rain screen must have a permeability of at least **0.5g/m2.h.mmHg**.

Choices include:

- Impregnated bitumen felts complying with the with the P84-302 and P 84-307 NF standards.
- Soft bituminous fiber panels.
- Non-woven polyethylene or polyester coated films, with or without bitumen.

3. Wood frame dimensions

Spacing on the support structure depends on the thickness of the panel.

To ensure adequate ventilation behind the panels, Allin recommends **installing the frame only in a vertical position**.

PANEL THICKNESS	MAXIMUM SPACING
10 mm	500 mm
12 mm	600 mm
> 15 mm	700 mm

The thickness of the supporting structure depends on the thickness of the panels.

PANEL THICKNESS	MINIMUM STRUCTURAL THICKNESS
10 mm	20 mm
12 à 15 mm	30 mm
18 à 22 mm	40 mm
> 25 mm	50 mm



EXTERIOR ALLIN – BRUYNZEEL PANELS FIXATION AND FINISHES GUIDE

p. 2/2

4. Installation

The D.T.U 41.2 specifies that the vertical and horizontal joints must be installed as follows.

§ 6.4.1.2.2 Vertical joints

To allow room for the dilatation of the panels, some play must be planned between each of them. The Allin Cladding and Allin Paint panels require a **10 mm joint**. Vertical joints must be placed on a support.

§ 6.4.1.2.2.1 Hollow joints

Vertical joints may be hollow and unfilled. In such case, the support must be protected by a protective strip. **Its width corresponds to that of the joint, plus a 30 mm margin.** The firm Allin recommends EPDM protective strips.

On a wood frame the wall, the wall must be made waterproof using a **moisture barrier**.

§ 6.4.1.2.3 Horizontal joints

§ 6.4.1.2.3.1 In part

Horizontal joint between the two panels (or panel elements) cannot be treated with a continuous adherent coating.

This junction is made by overlapping the top cladding panel onto the bottom panel **on a height of 3cm**. A gap of **at least 1cm** must be left between the two panels. This gap is unnecessary if the two surfaces touching have previously been treated with a waterproofing product. This can also be achieved by the installation of a horizontal (metal or plastic etc.) drip. There must be no continuous contact between the top panel and the drip.

The CTBA states that if the panels include machining of which the effect corresponds to that of the drip, **the use of the drip is not mandatory for the installation of exterior cladding.**

The overlapping panels may be in contact provided that the bottom face have previously been treated with a waterproofing product.

In both cases, the bottom edge of the top panel must be properly protected. The use of U-shaped metal or plastic rod is prohibited.

5.

Finishes

Allin panels fixed outdoors must be provided with a 15° angle, machined on the top and bottom edges, as well as a 3mm radius on all 4 tips on visible angles. All 4 edges must also be sanded. The 15° angle of the top edge enables the evacuation of water away from the facade. The 15° angle of the bottom edge allows water to form drops and drip away.

Stain and paint must be applied in 3 coats with sanding in between on the face, 2 coats with sanding in between on the counter-face, and 5 coats with sanding in between on the edges.

In any case, comply with the “59.1 NF DTU – Paint coating” rules.



DECLARATION OF PERFORMANCE (DOP)

N° DOP :	DDP GB-01	Version 21 of 01/02/2021
Identification code :	EN 636-3	
Type number :	ALLIN GARANT OKOUME	
Intended use :	For structural elements (floor, roof, wall) in internal or external applications	
Manufacturer :	SAS ALLIN - Route de la Couarde - 79270 LE VANNEAU contact.allin@groupe-arbor.com - www.allin.fr	
Evaluation and verification of system performance :	CE 2+	
The notified organism :	FCBA 0380	
performed :	initial inspection of the manufacturing facility and control of factory production and monitoring, evaluation and continuous assessment of control of factory production	
delivered :	the factory production control certificate : 0380 – CPR – N°213	

DECLARED PERFORMANCES :

Essential characteristics	Performances														Harmonized technical specification			
									10	12	15	18				22		
Thickness in mm																		
Bonding quality	3																	
Density : Kg/m³	500																	
Reaction to fire	E							D-s2,d0										
Release of formaldehyde	E1																	
STRENGTH : N/mm²																		
Bending // to faces									35,0	32,4	32,0	34,0			28,8			
Bending ⊥ to faces									24,0	26,7	27,0	25,0			30,2			
Tension // to faces									11,8	8,7	11,8	13,0			10,9			
Tension ⊥ to faces									11,7	14,8	11,7	10,5			12,6			
Compression // to faces									19,3	14,3	19,3	21,3			17,9			
Compression ⊥ to faces									19,2	24,2	19,2	17,2			20,6			
Planar shear // to faces									1,4	1,4	1,4	1,4			1,4			
Planar shear ⊥ to faces									1,4	1,4	1,4	1,4			1,4			
Panel shear									6,2	6,2	6,2	6,2			6,2			

EN 13986
: 2004 + A1 :
2015



Essential characteristics	Performances														Harmonized technical specification		
									10	12	15	18		22			
Thickness in mm																	
ELASTICITY : N/mm²																	
Bending // to faces								5 490	5 070	5 010	5 320			4 510			
Bending ⊥ to faces								3 750	4 170	4 230	3 920			4 730			
Tension // to faces								4 620	3 430	4 620	5 110			4 290			
Tension ⊥ to faces								4 620	5 810	4 620	4 130			4 950			
Compression // to faces								4 620	3 430	4 620	5 110			4 290			
Compression ⊥ to faces								4 620	5 810	4 620	4 130			4 950			
Planar shear // to faces								70	70	70	70			70			
Planar shear ⊥ to faces								70	70	70	70			70			
Panel shear								430	430	430	430			430			
Punching shear resistance	NPD																
Impact resistance	NPD																
Water vapour permeability (μ)																	
- wet cup	45																
- dry cup	180																
Sound absorption [250-500] Hz	0,1																
Sound absorption [1000-2000] Hz	0,3																
Thermal conductivity (W/m.K)	0,13																
Release of pentachlorophenol (ppm)	< 5																

EN 13986 : 2004 + A1 : 2015

EN 13986 : 2004 + A1 : 2015

The performance of the product identified is in accordance with the declared performance.

This declaration of performance is issued under the sole responsibility of the manufacturer identified above.

Signed on the behalf of the manufacturer by :	J. ROUSSEAU	Quality Manager	The :	01/02/2021	in :	Le Vanneau
---	-------------	-----------------	-------	------------	------	------------